

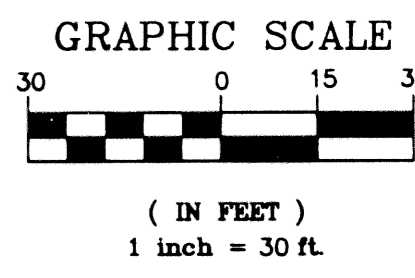
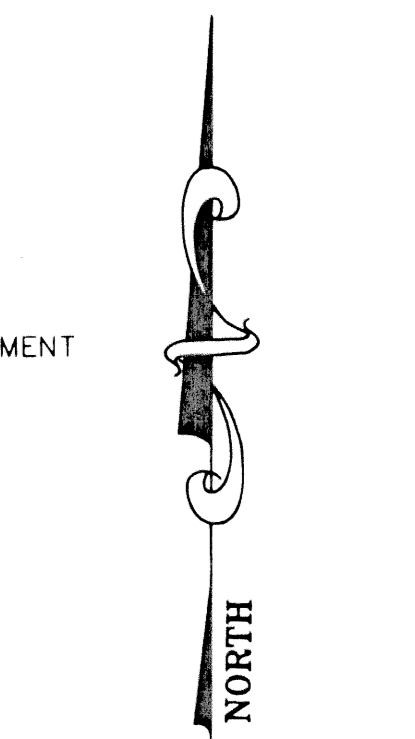
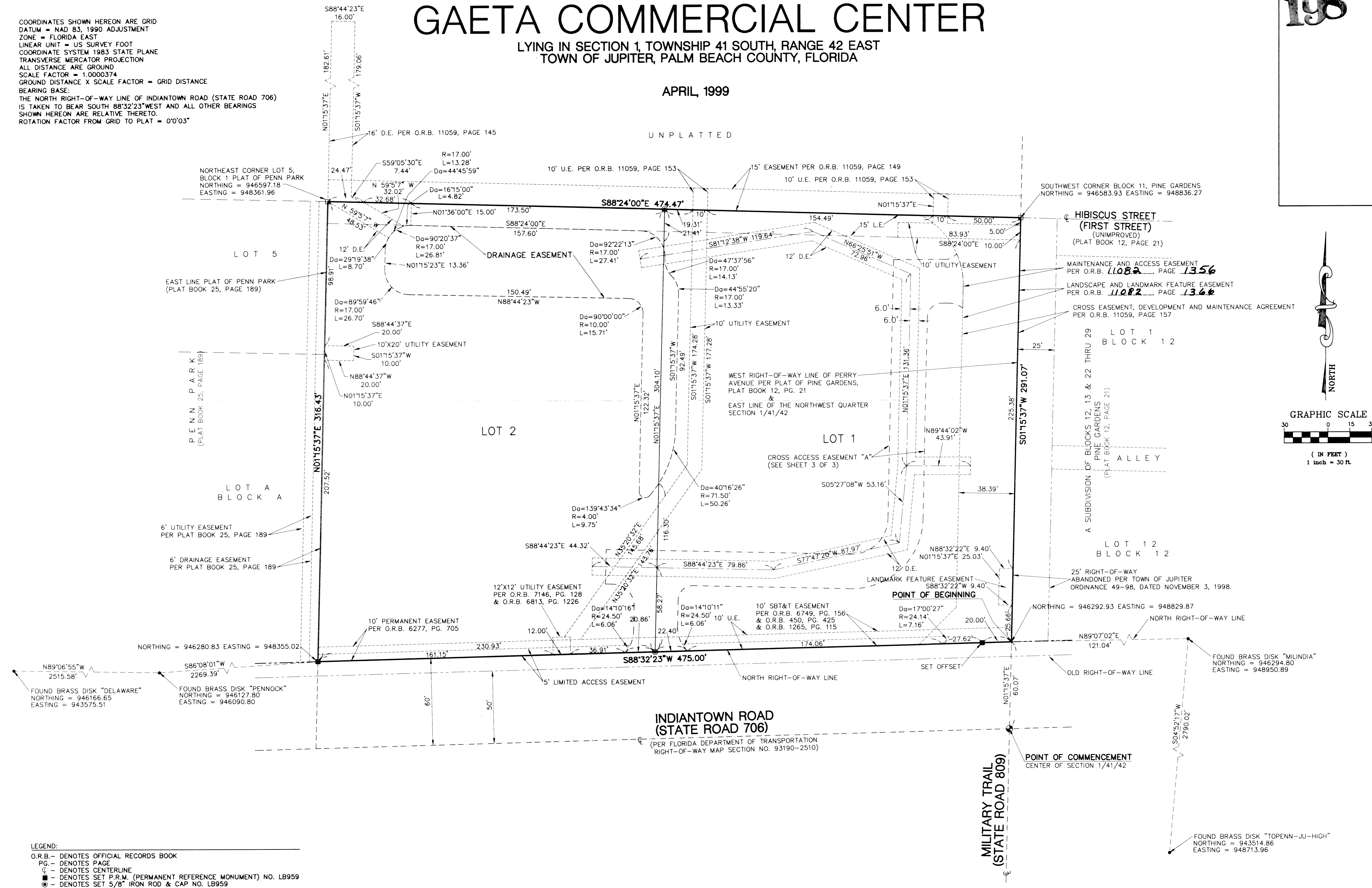
# GAETA COMMERCIAL CENTER

LYING IN SECTION 1, TOWNSHIP 41 SOUTH, RANGE 42 EAST  
TOWN OF JUPITER, PALM BEACH COUNTY, FLORIDA

APRIL, 1999

UNPLATTED

COORDINATES SHOWN HEREON ARE GRID  
 DATUM = NAD 83, 1990 ADJUSTMENT  
 ZONE = FLORIDA EAST  
 LINEAR UNIT = US SURVEY FOOT  
 COORDINATE SYSTEM 1983 STATE PLANE  
 TRANSVERSE MERCATOR PROJECTION  
 ALL DISTANCE ARE GROUND  
 SCALE FACTOR = 1.0000374  
 GROUND DISTANCE X SCALE FACTOR = GRID DISTANCE  
 BEARING BASE:  
 THE NORTH RIGHT-OF-WAY LINE OF INDIANTOWN ROAD (STATE ROAD 706)  
 IS TAKEN TO BEAR SOUTH 88°32'23" WEST AND ALL OTHER BEARINGS  
 SHOWN HEREON ARE RELATIVE THERETO.  
 ROTATION FACTOR FROM GRID TO PLAT = 0°0'03"



- LEGEND:**
- O.R.B. - DENOTES OFFICIAL RECORDS BOOK
  - PG. - DENOTES PAGE
  - ⊙ - DENOTES CENTERLINE
  - - DENOTES SET P.R.M. (PERMANENT REFERENCE MONUMENT) NO. LB959
  - ⊙ - DENOTES SET 5/8" IRON ROD & CAP NO. LB959
  - - DENOTES FOUND P.R.M. (PERMANENT REFERENCE MONUMENT) NO. LB2799
  - D.E. - DENOTES DRAINAGE EASEMENT
  - U.E. - DENOTES UTILITY EASEMENT
  - ⊙ - DENOTES CENTER OF SECTION



**LINDAHL, BROWNING, FERRARI, & HELLSTROM, INC.**  
 CONSULTING ENGINEERS, SURVEYORS & MAPPERS

2090 PALM BEACH LAKES BLVD. 3550 S.W. CORPORATE PKWY 2222 COLONIAL ROAD 421 N.W. 3RD STREET  
 TOWER II, SUITE 600 PALM CITY, FL 34990 SUITE 201 DKEECHOBEE, FL 33972  
 WEST PALM BEACH, FL 33409 561-286-3883 FT. PIERCE, FL 34950 561-746-9248  
 561-684-3375 561-461-2450